



**KRAMER**  
*on the safe side*

## Wheel loaders

KL10.5, KL12.5, KL19.5, KL25.5T



**The compact genius  
among wheel loaders.**

Great size, great performance.



The range of applications of the compact Kramer wheel and tele wheeled loaders in agriculture is extremely diverse. Due to a wide selection of front and rear attachments, tasks such as bale handling, removing silage, material handling or feeding and cleaning work can be taken care of efficiently and quickly.



The agile all-rounder in the farmyard.



# KL10.5 KL12.5

Kramer—  
on the safe side.

The traditional brand Kramer has been established on the market for many years and in particular stands for one value: safety. The high quality of the innovative machines is only one aspect. As a company, Kramer is also a safe choice for customers and dealers, since the experience and innovative power of the company provides for investment and future security. In short, you are always on the safe side with Kramer: "Kramer—on the safe side!"

Safety, comfort and variety of options are top priority at Kramer, which can be seen in every detail of our products. You can completely rely on Kramer wheel and tele wheeled loaders—and in every application.





**Unrivaled in concept.**  
Forward-looking in  
technology and design.

KL10.5  
KL12.5  
KL19.5  
KL25.5T

**Gentle retraction and extension**  
thanks to the end position damping  
in the extension system.

**High bucket apron, long bucket base and large  
tilt-in and tilt-out angle** for secure and quick  
material transport with a high degree of filling.

**More reach and lift height** due  
to a telescoping loader unit.

**Fatigue-free working**  
thanks to the spacious and  
ergonomic comfort cabin.

**Reduced operating  
costs** through optimum  
power to weight ratio and  
compact dimensions.

**High reliability** through easily  
accessible maintenance points  
and proven components.

**More flexibility for your application** thanks to the 3rd control circuit,  
pressure-free return line with leakage oil pipe and front plug receptacle  
or for the use of a rotary sweeper.

**The hydraulic quickhitch facility**  
makes the Kramer an all-rounder in seconds,  
right from the operator's seat. Work efficiently  
with a parallel-guided loader unit with  
P-kinematics for wheel loaders and with  
Z linkage for the tele wheeled loader.

**Independence in application** thanks  
to optional high speed and a variety of  
tyre options.

**Safety and time savings** through a one-piece  
frame and all-wheel steering for greater  
stability and manoeuvrability.

**Continuous drive system—**  
with optionally two types of steering up to  
30 km/h. (Front wheel steering and  
all-wheel steering)

**Wide and safe entry**  
thanks to the single-piece frame and all-wheel steering.





# KL10.5

## Safe in every respect— Wheel and tele wheeled loaders from Kramer.

The all-wheel steering system and single piece chassis are built into all our loaders:  
These two components ensure optimum stability on uneven ground conditions and make material handling with a consistently high payload possible at the same time.



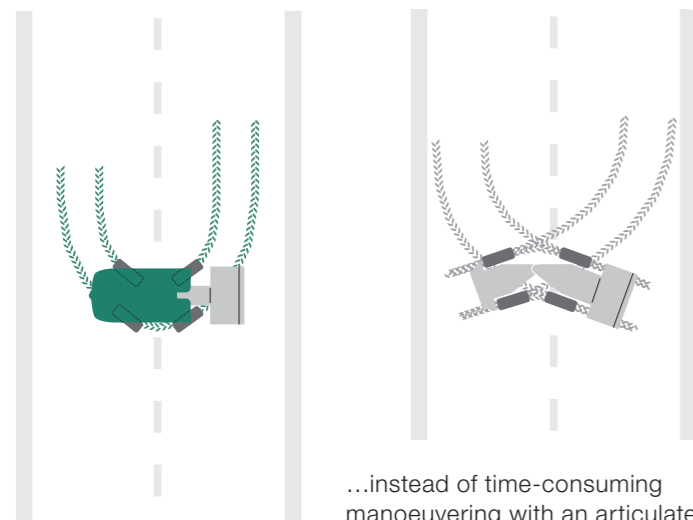
**KRAMER**  
*on the safe side*



### One-piece frame and all-wheel steering:

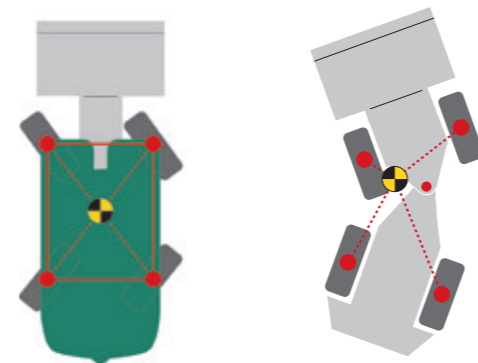
- Outstanding stability, because the center of gravity is not changed by the steering movements
- Outstanding manoeuvrability thanks to the all-wheel steering
- Consistently high payload, even when cornering
- Protection of the substrate through free rolling wheels and low operating weight
- Shorter movement and cycle times thanks to larger steering angle
- Usual handling and safe road travel with optional front wheel steering

### Turn on a dime with all-wheel steering...



...instead of time-consuming manoeuvring with an articulated joint.

### Undivided chassis for high levels of stability...

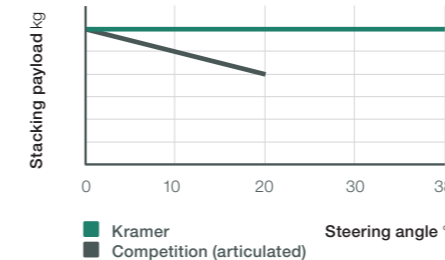


...without a shift in the center of gravity, also with steering movements.

### Constant leverage for constant payload



### Constant payload



### Tremendous manoeuvrability

The all-wheel steering and steering angles of 38degrees on each axis afford you a high degree of manoeuvrability. This makes some steering movements unnecessary resulting in shorter cycle times.

### High stability

Our wheel loaders are designed with an undivided chassis which prevents a shift in the center of gravity, even at a full steering angle. The vehicles therefore offer outstanding stability, even when working on uneven terrain.

### Constant payload

The undivided chassis prevents the distance between the counterweight and loader unit from changing. The result: constant leverage, which makes working safe in all load situations. In the process, the payload always remains the same regardless of the steering angle.



# KL10.5 KL12.5

## Created for the routine. Equipped for special tasks.

The optimal setup of the loader unit provides for the best visual conditions of the different attachments and the quickhitch plate. This simplifies the fast replacement of the attachments using the 3rd control circuit even further.

Thanks to the integrated continuous function, driving hydraulic special attachments is easy—so you are ideally equipped for special tasks.

### Fully automatic load stabilizer



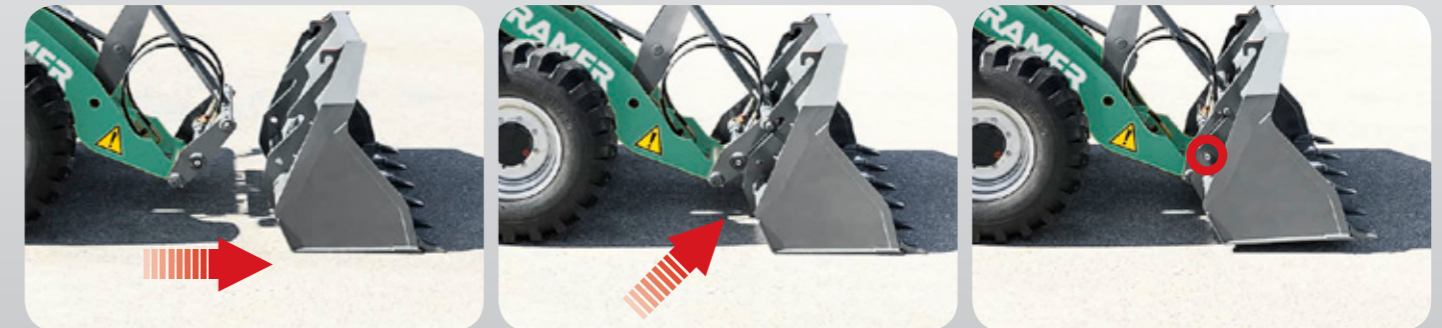
**Protects man and machine:** the load stabilizer dampens oscillations of the loader unit or the load and thus ensures total operator safety and comfort at higher speeds.

### Hydraulic quick coupler system and parallel-controlled loader unit:

- Instant replacement of attachments
- High not sure what this means capacity due to four large bolts arranged in dirt-protected area
- Secure material handling due to optimized bucket geometry
- Simple and safe handling thanks to optimal visibility of the attachment and working area



The parallel guidance of the loader unit always keeps the load perfectly in balance, both in bucket and stacking operations.



The Kramer quickhitch system:  
Drive up to the attachment. Hydraulically pick up the attachment from your seat with a clear line of sight. Lock it via the touch slide on the joystick.

The parallel guided loader unit is designed so that the operator has the best visual conditions of the various attachments. With all models, these can easily and quickly be replaced in no time thanks to the standard installed 3rd control circuit.

The loader can be equipped and used for diverse tasks with a wide variety of attachments. The Kramer wheel loader is therefore one of the most versatile machines on your farm.





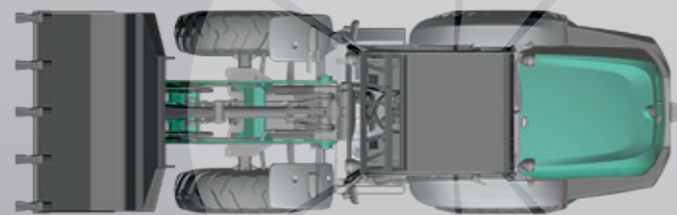
At work with comfort.  
Controlled with ergonomics.



**All-round visibility.** The panoramic cab with 360° all-round visibility and permanent view of the respective attachment for maximum safety in the work area around the machine.

**Color coding on the key pad:**  
four colors for even more safety.

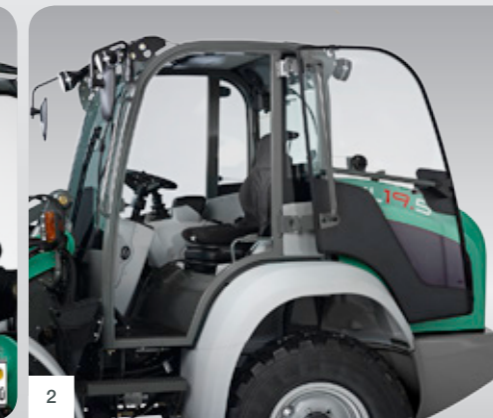
- Security
- Driving
- Hydraulics
- Electrical system



### Roomy cab with perfect all-round visibility:

- Excellent visibility of the current attachment device and work environment
- Generous interior width and height
- Wide entrance and intuitively placed grab handles
- High operating comfort through multi-functional joystick with integrated arm support
- Safety thanks to the intuitive two-pedal system
- Fully integrated, powerful heater and ventilation
- Ventilation window
- Air-conditioning system\* for comfortable work in all operating conditions

\* Not for KL10.5 and KL12.5



- 1 Ventilation window with various opening angles for fresh air circulation as needed
- 2 Wide door opening and step geometry for safe and comfortable entry
- 3 The models KL10.5, KL12.5, KL19.5 and KL25.55T are available as a canopy version as standard
- 4 Spacious interior with ergonomically arranged operator's controls

The redesigned cabin design stands for the highest level of comfort, optimal ergonomics and functionality in every detail:

The compact wheel loaders prove to be real space savers and ensure fatigue-free working in the process. The operator's controls are ergonomically positioned and ensure safe handling of the machine—both for professionals and occasional operators.





KL10.5  
 KL12.5  
 KL19.5  
 KL25.5T

Time tested and proven in driving.  
 Safely on the go.



**Efficient drive system and low operating costs:**

- Operation-oriented and efficient drive system with high pushing power
- Simple travel direction change via joystick
- Low sound levels and reduced fuel consumption thanks to requirement-oriented engine versions
- Traction on every surface due to various tyre options and differential lock



Engine with pump unit

All models in the Kramer compact class have a demand-driven, efficient engine as well as a continuously variable power transmission thanks to the latest hydrostat technology.

**The Kramer KL10.5 and KL12.5**

achieve incomparable dynamics through the drive system with four wheel hub motors. At the same time, the center of gravity sits lower, which in turn increases stability.

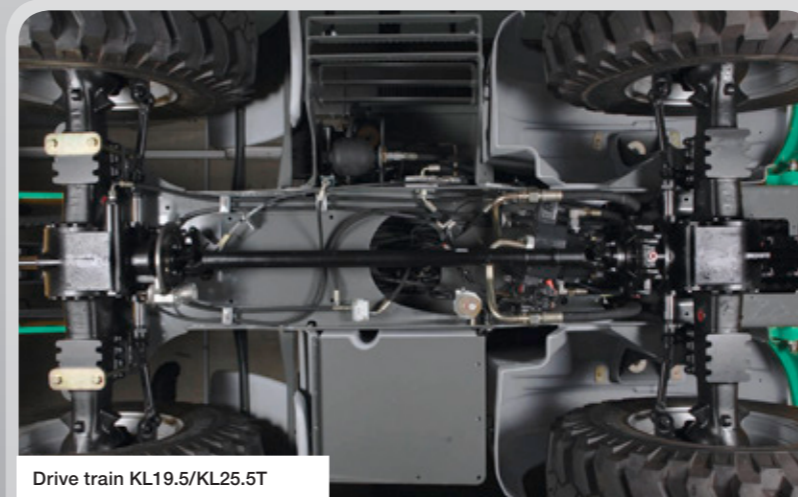


Wheel hub motor KL10.5, KL12.5



Yanmar 4TNV88C

The models KL19.5 and KL25.5T can optionally be equipped with a common rail engine. This engine corresponds to the exhaust emission standard EPA Tier4 final. The exhaust emission standard is achieved with the help of a diesel particulate filter (DPF) and diesel oxidation catalytic converter (DOC).



Drive train KL19.5/KL25.5T

**The Kramer KL19.5 and KL25.5T**

win over due to their powerful axial piston, high pressure drive with excellent pushing power and infinitely variable power transmission (hydrostat). It reaches a speed of to 30 km/h with the optional high speed transmission.

Thanks to the official approval for road use, it can also play its strengths on the road with a load or trailer.



# At home in versatility. Suited for all tasks.

The work hydraulics allow for sensitive work at low operating forces and low noise levels in the cabin. In addition, the standard installed 3rd control circuit with continuous function allows for efficient and convenient operation of hydraulically driven attachments. Matching dimensioned cylinders, efficient flow conditions and adapted discharge volumes enable quick work cycles.

With the optional **powerflow**, powerful driving of hydraulic attachments is possible.

- 1 Easy and secure connection of the attachment
- 2 Mulch insert with **powerflow** performance hydraulics
- 3 Sweeper application with efficient 3rd control circuit (standard)



## Versatility due to 3rd control circuit and **powerflow**:

- Hydraulic quick coupler system standard
- Increased flexibility due to efficient 3rd control circuit
- **powerflow** performance hydraulics for powerful driving of attachments with increased power requirement (optional)\*
- Large sized hydraulic cooler for long-time application in power operation

\* Not available for KL10.5

### Concept solution for system bearer

	KL10.5	KL12.5	KL19.5	KL25.5T
<b>HYDRAULIC PERFORMANCE VALUES</b>				
3rd control circuit* l/min/bar	20/180	20/180	56/190	56/190
Auxiliary control circuit l/min/bar	-	40/160	-	-
<b>powerflow</b> performance hydraulics* l/min/bar	-	60/160	90/180	90/180
<b>OUTFITTING VARIANTS</b>				
Front power socket	-	●	●	●
Pressureless reverse travel	-	●	●	●
Manual throttle	-	●	●	●
Low-speed control	-	●	●	●

\* Maximum values



Born for reliability.  
In use for generations.



SERVICE-ORIENTED  
COMPONENT ARRANGEMENT

Air cleaner

Hydraulic oil level

Engine oil level

Maintenance and service:

- Easy maintenance access due to engine hoods that open wide
- Good access for regular maintenance and control procedures
- Easy to fill diesel tank and standard fuel pre-filter
- Low-maintenance, easy to clean disc brake system
- Customer-oriented service and quick spare parts availability



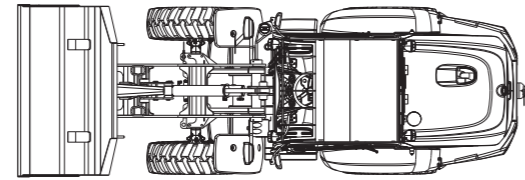
With the longitudinally installed engine, Kramer demonstrates that compact dimensions can be combined with easy access for maintenance.

Under the hood all components that must be checked regularly (such as the air filter, fill level of the hydraulic oil, etc.) are ideally situated. All necessary inspection, maintenance and service work can therefore be carried out with ease thanks to the clear arrangement.

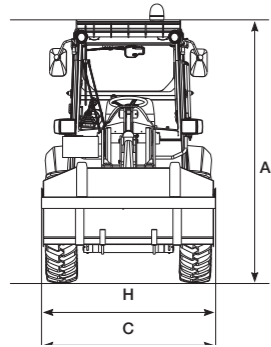
To summarize, Kramer compact wheel loaders convince, not only because of their legendary reliability but also for their leading 'cost of ownership' position.



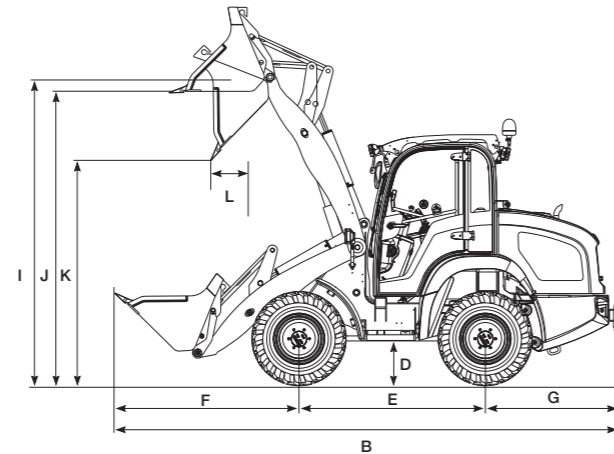
## Technical data.



Wheel loader with standard bucket and standard tyres (top view)



Wheel loader with standard bucket and standard tyres (front view)



Wheel loader with standard bucket and standard tyres (side view)

	KL10.5	KL12.5	KL19.5	KL25.5T
<b>A</b> Height mm	1,980	1,990	2,380	2,470
<b>B</b> Length mm	4,080	4,080	4,950	5,350
<b>C</b> Width* mm	1,200	1,200	1,590	1,590
<b>D</b> Ground clearance mm	230	230	270	280
<b>E</b> Wheel base mm	1,525	1,525	1,850	2,000
<b>F</b> Center of the front axis up to the tip of the teeth mm	1,360	1,360	1,780	1,992
<b>G</b> Center of the rear axle to the end of the vehicle mm	1,195	1,195	1,320	1,320
<b>H</b> Bucket width mm	1,250	1,250	1,650	1,650
<b>I</b> Bucket pivot point mm	2,800	2,800	3,040	4,270
<b>J</b> Load-over height mm	2,690	2,690	2,890	4,010
<b>K</b> Dumping height mm	2,260	2,260	2,320	3,500
<b>L</b> Dumping reach mm	165	165	300	810
Stacking height mm	2,680	2,680	2,820	4,030
Turning radius of tyres mm	1,950	1,950	2,700	2,900
Turning radius of bucket mm	2,700	2,700	3,550	4,000
Turning radius of pallet forks mm	2,950	2,950	3,820	

\* With standard tires

# KL10.5 KL12.5 KL19.5 KL25.5T

## The essentials, supplemented. With plenty of attention to detail.

The compact wheel loaders from Kramer actually speak for themselves. All the more if you work with a love for attention to detail. Details that are perhaps not noticed at first glance. But that you learn to appreciate all the more at second glance. Welcome to the world of Kramer details.



Offset stairs for safe entry and exit

Large window wiper on the front windshield with left detent for better visibility

Practical placement of maintenance aids directly at the entry/exit



	KL10.5	KL12.5	KL19.5	KL25.5T
<b>OPERATING DATA</b>				
Bucket capacity m <sup>3</sup>	0.25–0.45	0.35–0.55	0.55–1.10	0.65–1.10
Weight kg	1,555	1,670/1,720*	3,450/3,600*	4,300/4,150*
Quickhitch system	Hydraulic	Hydraulic	Hydraulic	Hydraulic
<b>ENGINE</b>				
Make	Yanmar	Yanmar	Yanmar	Yanmar
Type/Design system	3TNV88	3TNV88/3TNV84T	4TNV88	4TNV88
Output kW/hp (Option)	23/31	23/31 (27/37)	35/48	35/48
Max. torque Nm at rpm	107 at 1,560	107 at 1,560 124 at 1,560 (Option)	136.3 at 1,680	142 at 1,100
Displacement cm <sup>3</sup>	1,642	1,642/1,496 (Option)	2,190	2,190
Exhaust emissions stage	IIIA			
Emission cm <sup>3</sup>	Tested and certified according to 97/68EC * 2,004/26 EC			
<b>POWER TRANSMISSION</b>				
Drive system	Continuously controllable, hydrostatic drive			
Speed km/h	0–20	0–20	0–20, 0–30	0–20, 0–27
Axles	Axle carrier made of cast steel with wheel hub motors		Planetary steering axle	Planetary steering axle
Total oscillating angle °	± 7	± 7	± 8	± 8
Differential lock	Compensation differential	Compensation differential Hydraulic differential lock	100% (Option VA)	100% VA
Service brake	Hydrostatic	Hydrostatic	Hydr. disc brake	Hydr. disc brake
Parking brake	Spring-loaded multi-disc brake, electro-hydraulically actuated		Mech. disc brake	Mech. disc brake
Standard tires	28 x 9.00–15	28x9.00–15	10.5-18	12.0-18
<b>STEERING AND WORK HYDRAULICS</b>				
Mode of operation	Hydrostatic all-wheel steering with emergency steering properties Front wheel steering (option)			
Steering pump	Gear pump via priority valve			
Steering cylinder	Double-acting, with automatic synchronization in final position			
Max. steering lock °	2 x 38°	2 x 38°	2 x 38°	2 x 38°
Work pump	Gear pump		Gear pump	Gear pump
Flow rate l/min	20	20, 40 (Option), 60 (Option)	56, 90 (Option)	56, 90 (Option)
Pressure bar	240	240	240	240
<b>KINEMATICS</b>				
Design system	Z linkage with optimized parallel motion		P kinematics	Z linkage
Lift capacity/tearout force kN	12.9/13.1	12.9/13.1	32.5/28	32/28
Raise/lower lift cylinder sec	6.0/4.3	6.0/4.3	4.8/3.2	6.7/5
Fill shovel/empty shovel sec	2.4/1.5	2.4/1.5	2.1/2.0	3.5/3
Fill angle/dump angle °	40/45	40/45	45/42	30/40
Tipping load (standard bucket) kg	1,080	1,250	1,980	2,500
Payload S = 1.25 (stacking) kg	650	750	1,600	1,650/1,600*
Payload S = 1.67 (stacking) kg	485	560	1,200	1,230/1,197*
Digging depth mm	40	40	65	43
<b>FILLING VOLUMES</b>				
Fuel tank/hydraulic tank l	30/40	30/40	60/58	60/58
<b>ELECTRICAL SYSTEM</b>				
Operating voltage V	12	12	12	12
Battery/alternator Ah/A	72/55	72/55	74/55	74/55
Starter motor kW	2.3	2.3	2.3	2.3

\* Canopy

### NOISE EMISSIONS

	KL10.5	KL12.5	KL19.5	KL25.5T
Measured value	99.7 dB	99.7 dB	100 dB	100 dB
Guaranteed value	101 dB	101 dB	101 dB	101 dB
Noise level at the operator's ear in the cabin console	82 dB	82 dB	82 dB	82 dB
Noise level at the operator's ear (canopy) (ROPS bar KL19.5)	84 dB	84 dB	84 dB	84 dB

Information: the measurement is done according to the requirements of the guidelines 2009/76/EC and 2009/63/EC.  
Measuring station: Asphalted surface.

### VIBRATIONS

Vibration total value of the upper body limbs	$< 2.5 \frac{m}{s^2}$ ( $< 8.2 \text{ feet/s}^2$ )			
Highest effective value of the weighted acceleration for the body	$< 0.5 \frac{m}{s^2}$ ( $< 1.64 \text{ feet/s}^2$ )			

Uncertainty of measurement of the vibration measurement according to the requirements of the standard DIN EN 474-1 and EN 12096.  
Please instruct or inform the operator about possible dangers from vibrations.





**KRAMER**  
*on the safe side*

**Kramer-Werke GmbH**  
Wacker Neuson Straße 1  
88630 Pfullendorf  
Germany  
Tel. 00 800 90 20 90 20\*  
Fax +49(0)7552 9288-234  
info@kramer.de  
www.kramer.de

\* Free of charge

